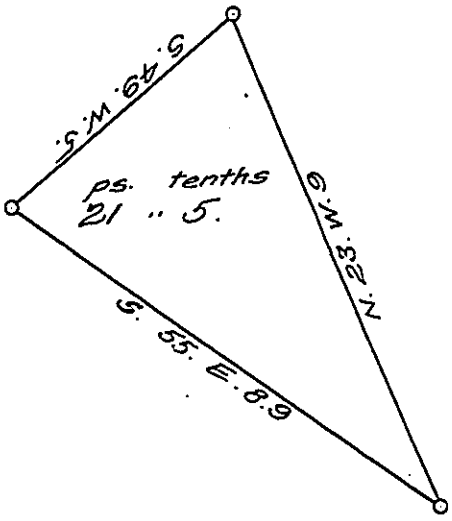


York County Shore



Lancaster County Shore

A Draught of an Island situate in the River Susquehanna in Little Britain township Lancaster County opposite land of Nicholas Boyd on the Lancaster shore and opposite lands of Stephen T. Cooper on the York shore some small distance below Boyds ferry course containing twenty one perches and an half strict measure Surveyed in pursuance of a Warrant dated the second day of August A.D. 1815 granted to Nicholas Boyd.

p^e. Jacob Hibshman D.S.

To Jacob Spangler Esq^r }
 Surveyor General. }

IN TESTIMONY that the above is a copy of the original remaining on file in the Department of Internal Affairs of Pennsylvania, made conformably to an Act of Assembly approved the 16th day of February, 1833, I have hereunto set my Hand and caused the Seal of said Department to be affixed at Harrisburg, this nineteenth day of November 1907.

Henry Howell
 Secretary of Internal Affairs.